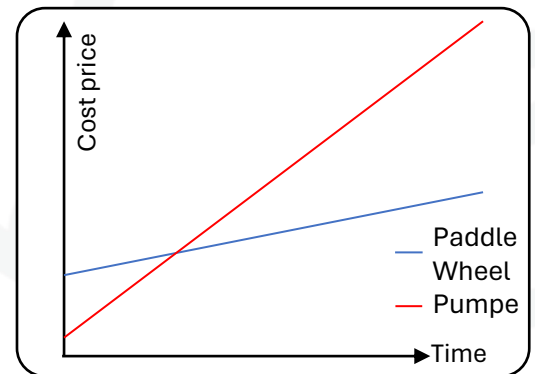
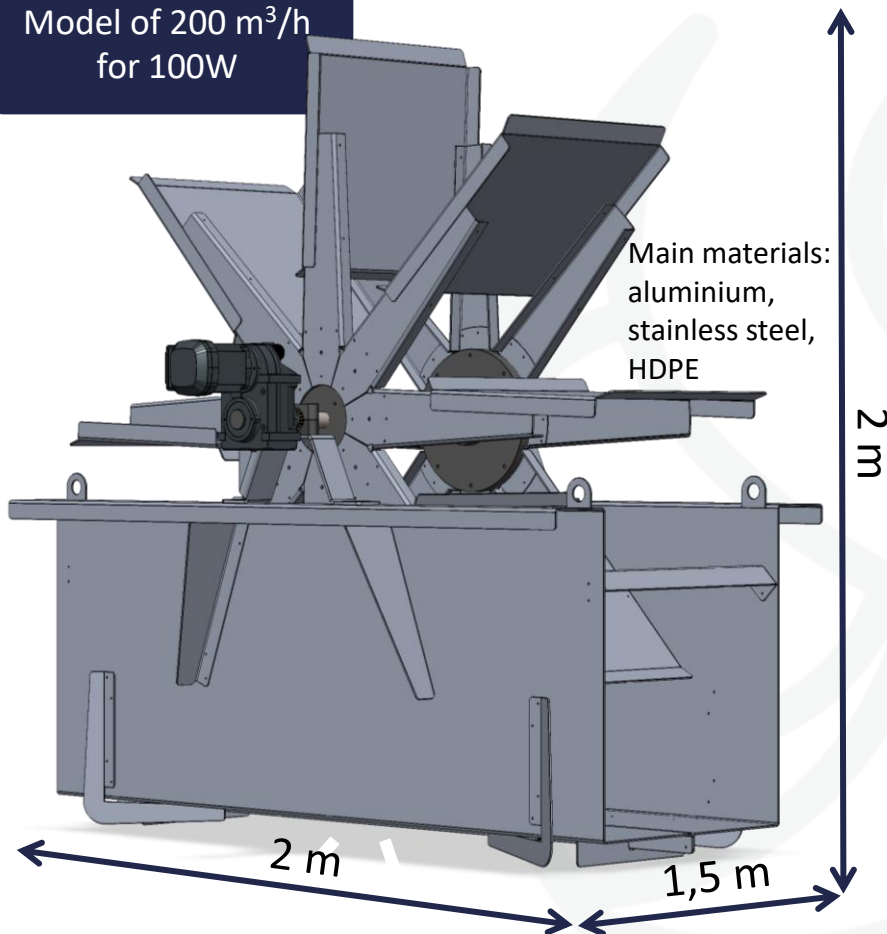


The Paddle Wheel for high flow rates with very low consumption.

Benefits :

- Allows **water circulation** to homogenises and stabilises the environment.
- Very low energy consumption: **0.5 Wh/m³** of water.
- **Robust**, requiring very little maintenance, even in saline environments.
- Suitable for both marshes and concrete surfaces.

Model of 200 m³/h
for 100W



Available flow rates	Power
200 m ³ /h	100 W
500 m ³ /h	250 W
1 000 m ³ /h	500 W
1 500 m ³ /h	750 W



